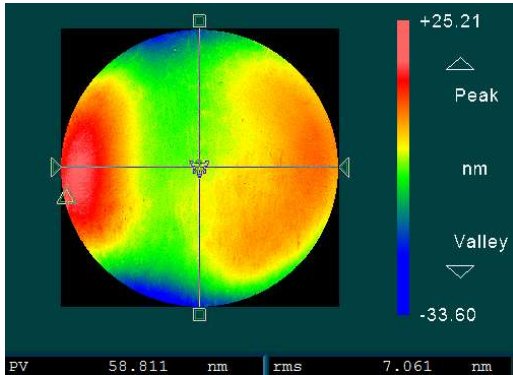




# IBF Examples - Controllability

## Quartz CC-D16R21.6, F1.35



Input Topology:

Ø<sub>prüf</sub>[mm]: 14.0

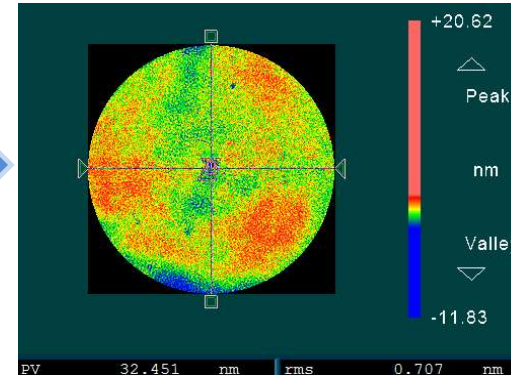
PVr [nm]: 46.0

RMS [nm]: 7.1

Filter: none

**PVr ~ λ/14**

IBF, 1 step  
2 mm beam  
0:21 h



Output Topology:

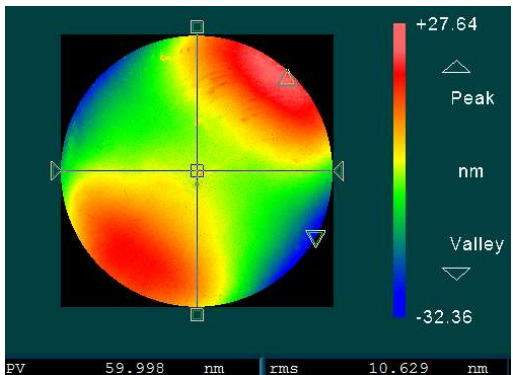
Ø<sub>prüf</sub>[mm]: 14.0

PVr [nm]: 4.7

RMS [nm]: 0.7

Filter: none

**PVr ~ λ/130**



Input Topology:

Ø<sub>prüf</sub>[mm]: 14.0

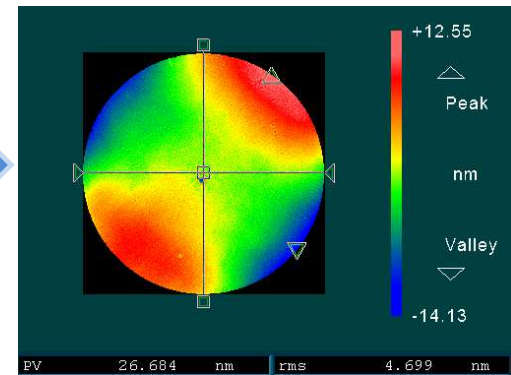
PVr [nm]: 59.4

RMS [nm]: 10.6

Filter: none

**PVr ~ λ/11**

IBF, 1 step  
2mm beam, PV λ/20  
0:09 h



Output Topology:

Ø<sub>prüf</sub>[mm]: 14.0

PVr [nm]: 26.7

RMS [nm]: 4.7

Filter: none

**PVr ~ λ/24**

**Shorter process time for precision optics PV = λ/20**